

www.sunveiceyachts.com

SUNVOICE 65

THE CALL OF THE SUN



TECHNICAL SPECIFICATION

Partners



NavalHEAD
INTERNATIONAL



SAN LORENZO AL MARE
CANTIERI

AGON
YACHT DESIGN STUDIO

SunVoice 65

HP23 LUX

The Sunvoice 65 is the first model of the new brand HP23 LUX. The boat is currently under construction at San Lorenzo al Mare shipyard in Imperia, Italy. The engineering is made by Navalhead International while the design, both exterior and interior, is signed by Agon.

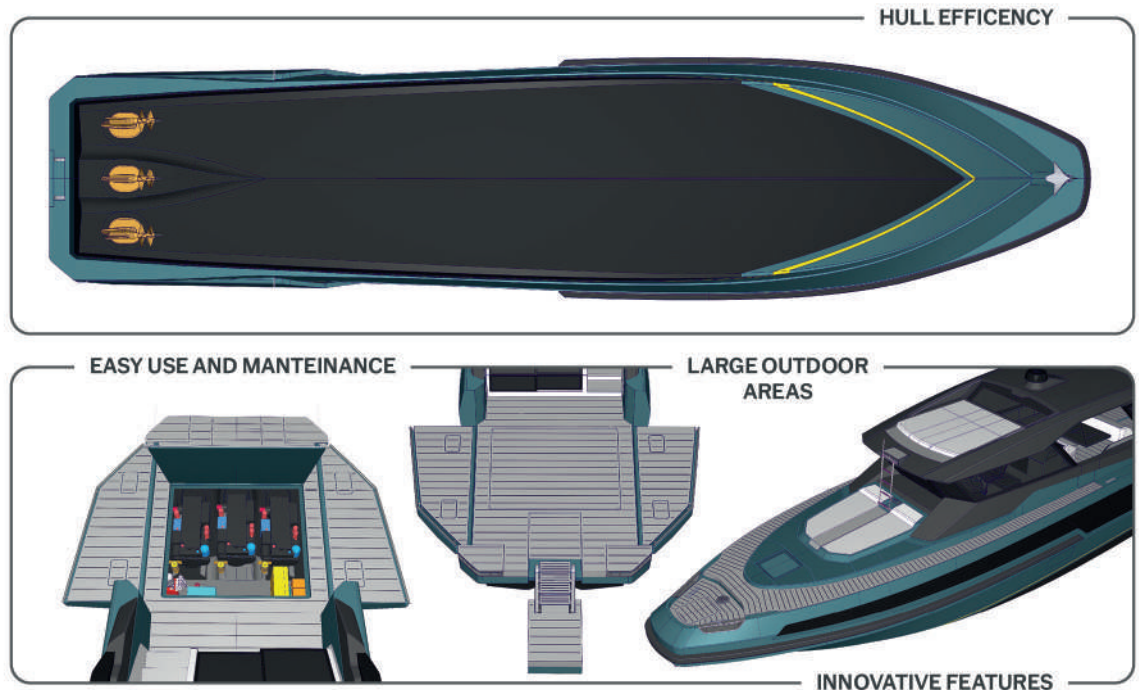


Hull construction material	GRP
Superstructures construction material	GRP
Overall length Loa	19,60 m
Hull length Lh	19,20 m
Maximum beam Bmax	4,60 m
Draft (with propellers) T	~ 1,1 m
Draft (without propellers) T	~ 0,89 m
Displacement (Full Load Condition)	~ 28 t
Fuel tank capacity	2500 l
Fresh water tank capacity	600 l
Black & Grey water tank capacity	200 l + 200 l
Engines	3 x IPS Volvo Penta D6-IPS650
Generator	1 x Fisher Panda 12kW - 50Hz
Maximum speed	30 kn
Cruising speed	24 kn
Range	~ 300 nm
Passengers	14 pax
Homologation and category	ISO CE Cat. B - Pleasure Craft
Design	AGON
Naval Architecture & Engineering	NavalHEAD

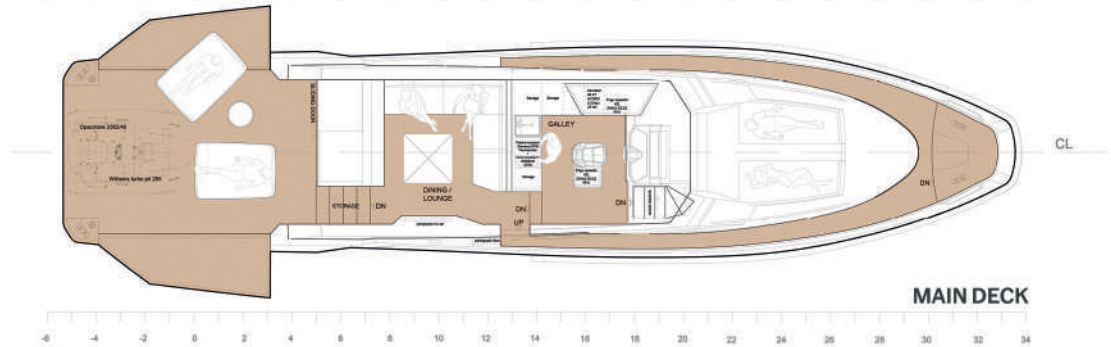
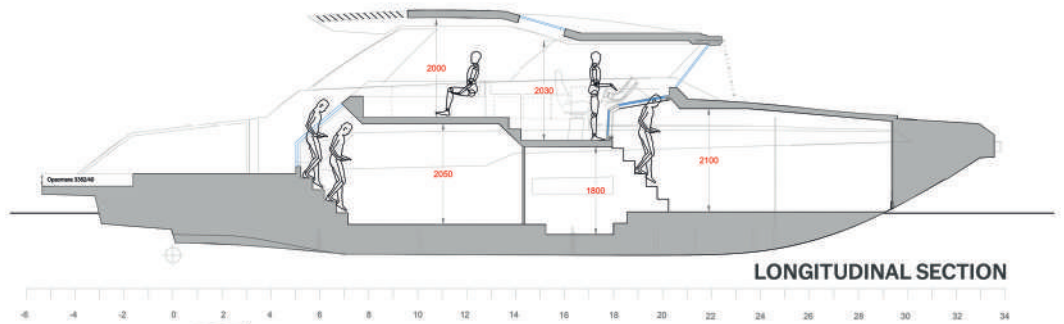
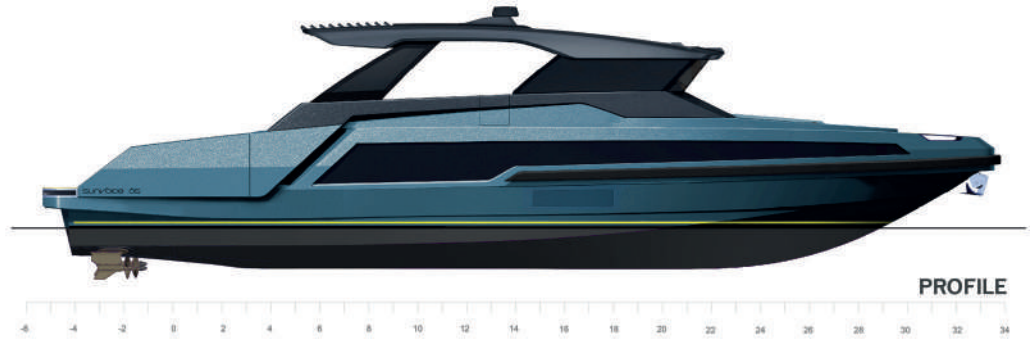
PHILOSOPHY

The **hull efficiency** and the good hydrodynamic performance, inspired by military vessels, are the key features of this project. Great care was taken in order to achieve an **easy use and maintenance** of the boat, as in the wide and accesible engine room hatch.

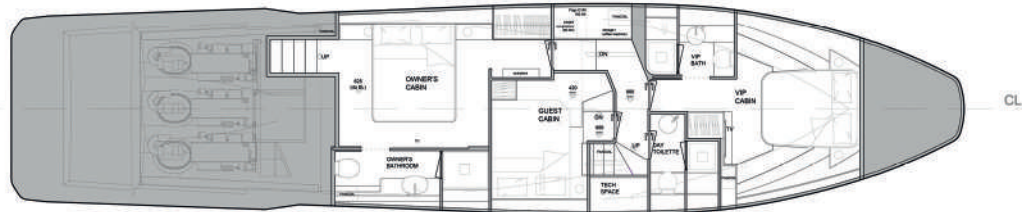
The **outdoor areas** are exceptionally large for a 20 meters boat: the big beach platform, with direct access from the owner's cabin, measures 17sqm and can be extended up to 27sqm thanks to the sliding bulwarks and the transformer. The boat is plenty of many other **innovative features** like: the bi-level bow facing sunpad area or cockpit arrangement.



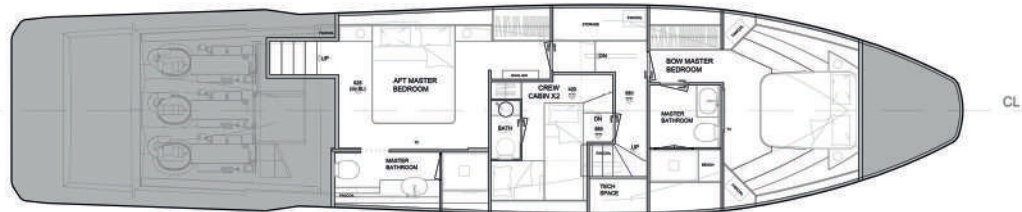
GENERAL ARRANGEMENT



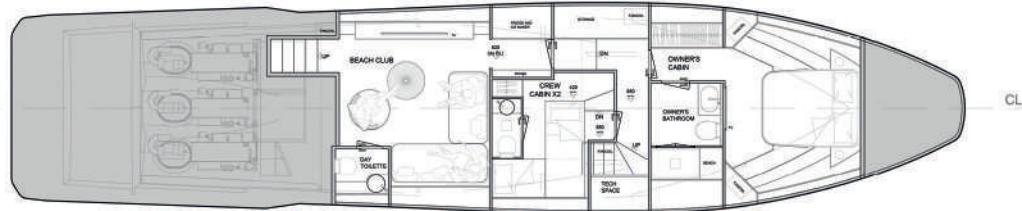
GENERAL ARRANGEMENT



LOWER DECK - 1

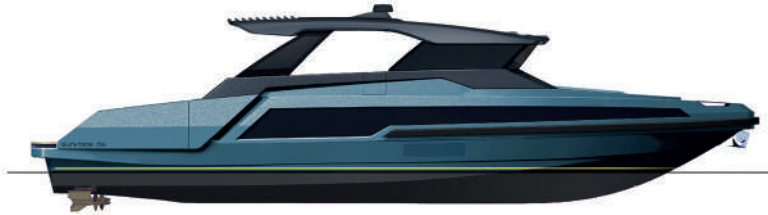


LOWER DECK - 2



LOWER DECK - 3

CONCEPT



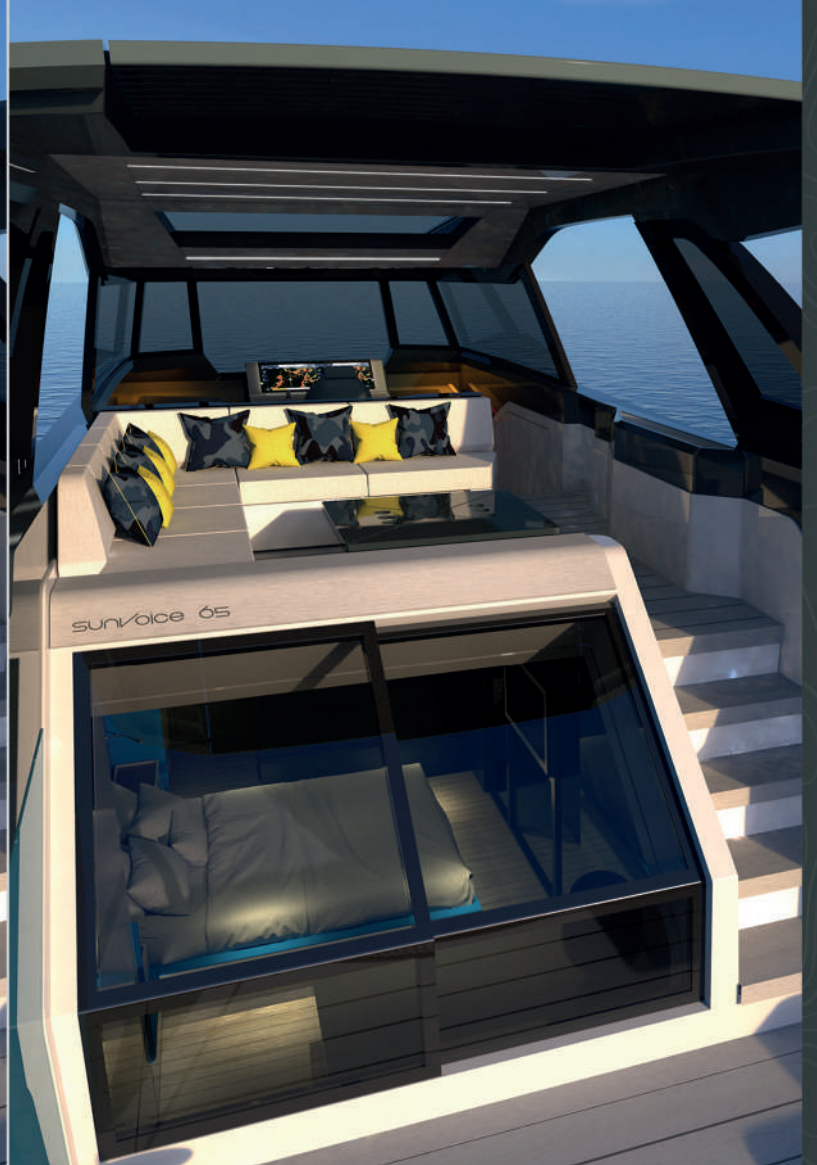
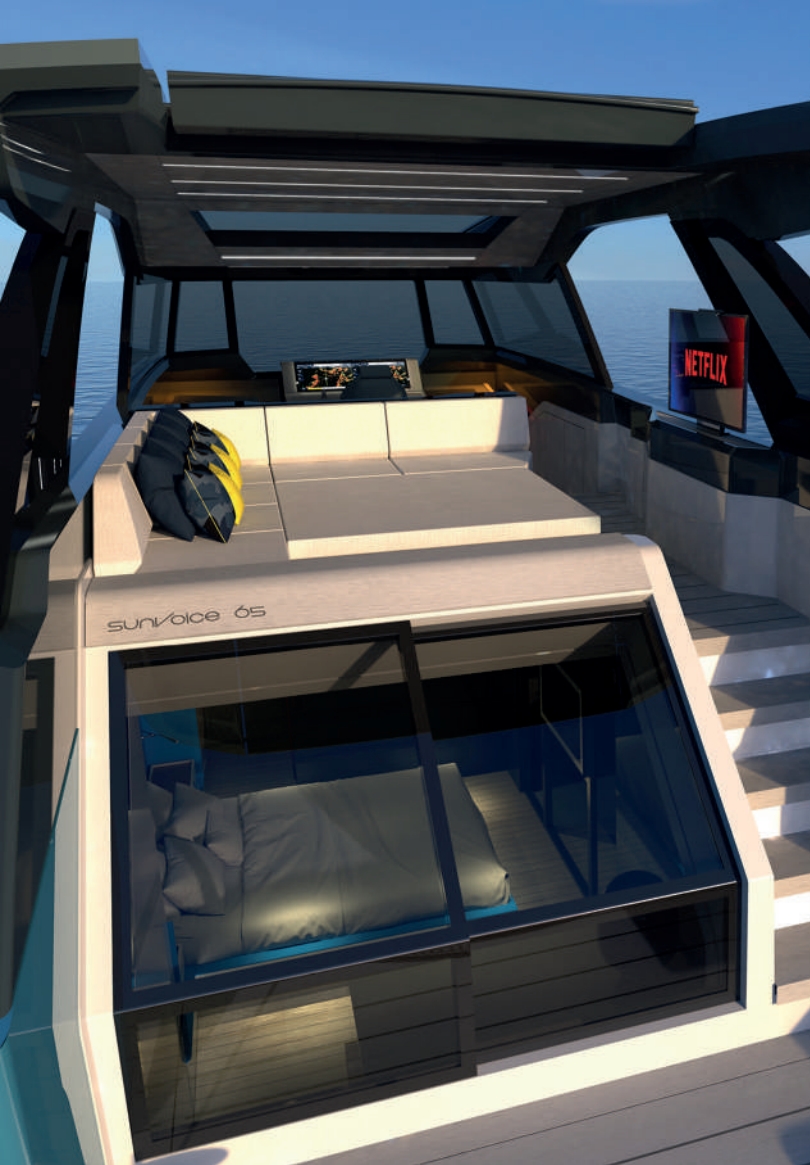
This vessel fuses together an heavy duty and a stylish boat. For example the aft can be easily converted from a tender and toys garage to a fancy beach club.

The multiple options of personalization ensure the client the chance to build his one-off boat.

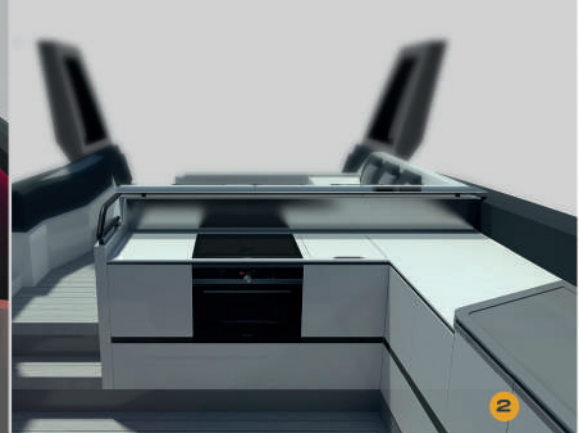
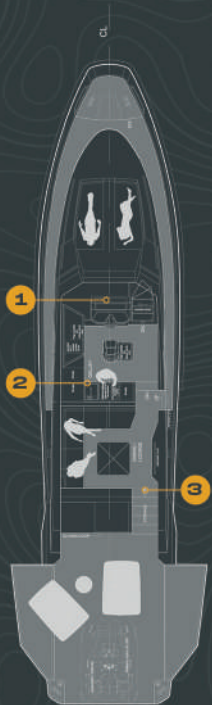








DASHBOARD, GALLEY AND COCKPIT



OWNER'S CABIN









OWNER'S CABIN



OWNER'S BATHROOM

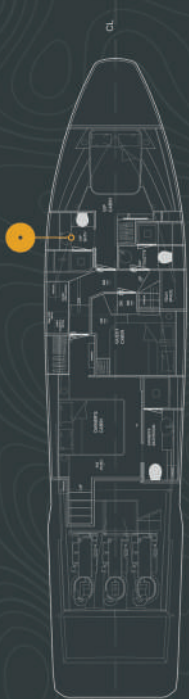


VIP CABIN

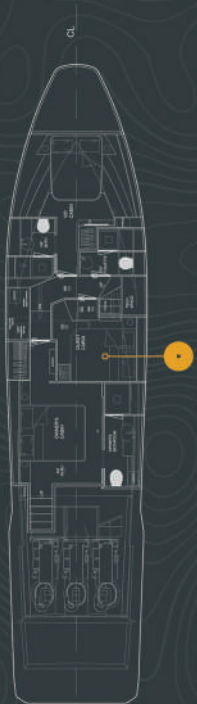




VIP BATHROOM



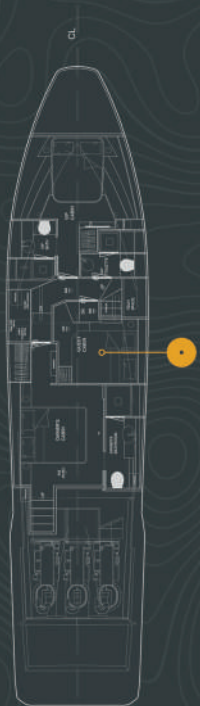
GUEST CABIN



sun/oice 65



GUEST CABIN



DAY TOILETTE



sun/oice 65



HP23 LUX

sunvoice
yachts

TECHNICAL PARTNERS



NavalHEAD
INTERNATIONAL



SAN LORENZO AL MARE
CANTIERI

AGON

YACHT DESIGN STUDIO

HP 23 LUXURY S.R.L.

Viale Santuario, 20 · 20831 Seregno (MB) — Italy

+39 333 321 82 52

technical@sunvoiceryachts.com sales@sunvoiceryachts.com